

Construction Notice

Lane Reductions and Traffic Shift on Stony Plain Road/102 Avenue between 138 & 146 Streets AREA 4

In mid-late August, Marigold Infrastructure Partners will begin construction works for Valley Line West on Stony Plain Road/102 Avenue between 138 and 146 Streets.

Most of the construction will be located on the south side of Stony Plain Road; however, some work will also occur on the north side of Stony Plain Road near 140 Street. To accommodate this, traffic on Stony Plain Road/102 Avenue between 138 and 146 Streets will be reduced to one lane in either direction. Lanes will also be shifted away from the construction site.

143 Street and Stony Plain Road

- Access to and from the south side of Stony Plain Road at 143 Street will be closed until **October 31, 2022**.
- Motorists are asked to use 101 Avenue and 142 Street as detours.

138 Street and 102 Avenue

- Access to and from the south side of 102 Avenue at 138 Street will be closed until **October 31, 2022**.
- Motorists are asked to use 137 Street as a detour.

Service Road South of 102 Avenue

- The west access (near 142 Street) to and from the service road on 102 Avenue/Stony Plain Road will be closed until **July 2023**.
- Motorists are asked to use 137 Street as a detour.

Pedestrian access will be maintained; however, detours may be in place. Access to businesses on Stony Plain Road will be maintained.

Construction will primarily occur during the day (7 a.m. to 9 p.m. Monday through Saturday and 9 a.m. to 7 p.m. Sunday), however, occasional overnight work may be necessary. The public will be notified in advance of this work.

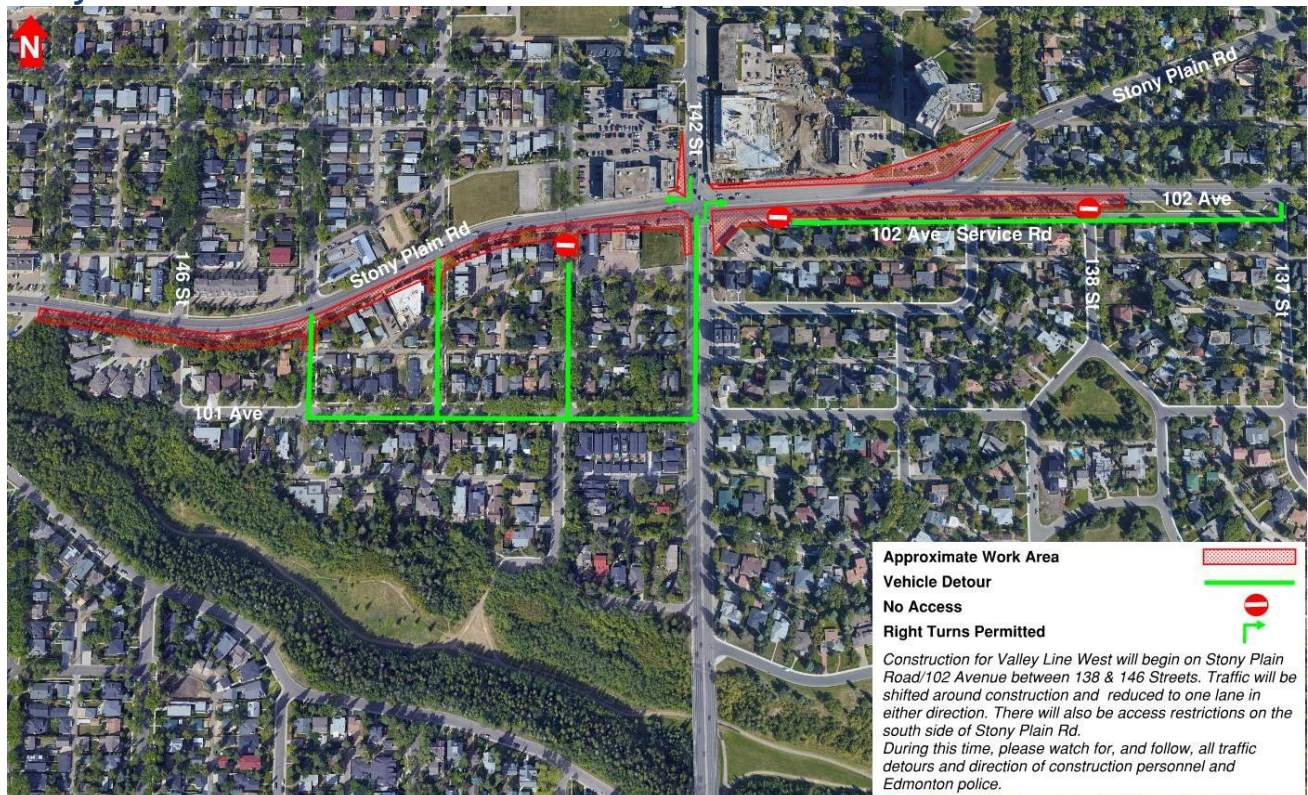
This traffic pattern will be maintained during peak, off-peak, and overnight hours and is expected to last until July 2023.

To accommodate this work, the public will be impacted in the following areas:

- Traffic on Stony Plain Road/102 Avenue between 138 and 146 Streets will be reduced to one lane in either direction.

- Traffic on Stony Plain Road/102 Avenue between 138 and 146 Streets will be shifted away from the construction site.
- Access to and from the south side of Stony Plain Road at 143 Street will be closed until October 31, 2022.
- Access to and from the south side of 102 Avenue at 138 Street will be closed until October 31, 2022.
- The west access (near 142 Street) to the service road on 102 Avenue/Stony Plain Road will be closed until July 2023.
- This work will primarily occur during daytime hours; however, some overnight work may be necessary.
- Pedestrian access will be maintained; however, detours may be in place. Please follow project wayfinding signage.
- Access to businesses on Stony Plain Road will be maintained.
- There will be noise associated with this work such as that of jackhammers and heavy equipment. Every effort will be made to reduce the impact to the public.

Stony Plain Road between 138 & 146 Streets



Marigold Infrastructure Partners is committed to following all City of Edmonton bylaws and regulations and has obtained an overnight roadwork permit so that work can take place during nighttime hours to minimize major daytime traffic disruptions. *City of Edmonton Bylaw C14600.

The information in this bulletin is current to July 25, 2022. Please note that all dates are approximate and weather dependent. We thank you for your patience during construction of the Valley Line West LRT project. Marigold Infrastructure Partners is excited to be a part of Edmonton's economic recovery.

Contact Us

Marigold Infrastructure Partners (for construction inquiries)

Visit: marigoldinfra.ca

Email: public@marigoldinfra.ca

Call: 780-412-2183

City of Edmonton (for general project inquiries)

Visit: edmonton.ca/valleylinewest

Email: lrtprojects@edmonton.ca

Call: LRT Projects Information Centre at 780-496-4874 (voicemail)