

## Winter Works

### Winter Construction on 104 Avenue, Stony Plain Road, 156 Street/Meadowlark Road and 87 Avenue

2024 has been a productive year for Marigold Infrastructure Partners as we continue to build Edmonton's Valley Line West LRT. We've made major progress along the route and Marigold crews will continue construction of the Valley Line West throughout the winter months. Crews are finishing permanent roadwork on one side of the road to start work on the other side.

#### What you can Expect

Over the coming weeks, throughout the Valley Line West alignment, work sites will flip to the opposite side of the road. To accommodate this, traffic will be shifted away from the new work zones, and most lane and access closures will reopen. Drainage work will commence in the new year and is expected to last until the Spring. Traffic along the work areas shown is subject to change as work takes place. Further details on these work areas will be released, as separate notices, as they become available.

#### Area 1 (102 Avenue & 102 to 107 Street, 107 Street & 102 Avenue to 104 Avenue)

##### Ongoing Construction on 107 Street between 102 Avenue and 104 Avenue

Construction continues on 107 Street and work will shift to the west side of the road soon. Traffic disruptions and pedestrian detours can be expected.



## Area 2 (104 Avenue & 107 to 121 Street)

### Traffic Shift on 104 Avenue between 107 Street and 121 Street

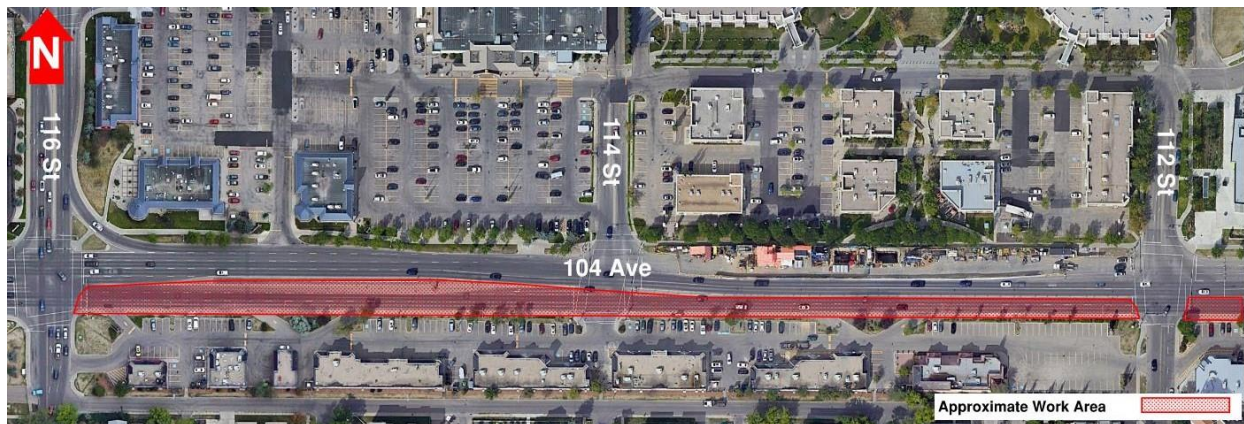
Traffic on 104 Avenue between 107 Street and 121 Street will shift to the north side of the road to facilitate upcoming construction. To accommodate this:

- Two lanes of traffic in either direction will be maintained.
- North/south traffic on 109 Street will be reopened to full capacity.
- Access to businesses on the south side of 104 Avenue will be maintained; however, temporary access closures will be required.
- Turn movements will be maintained, where access permits
- Pedestrian access will be maintained on the north side of 104 Avenue.
- Some crosswalks across 104 Avenue will be closed. Please follow area wayfinding signage.
- The bicycle lane on 121 Street between 104 Avenue and 105 Avenue will reopen.

### 104 Avenue between 107 Street and 112 Street



### 104 Avenue between 112 Street and 116 Street





### 104 Avenue between 116 Street and 121 Street



### Area 3 (104 Avenue/Stony Plain Road and 121 to 139 Street)

#### Traffic Shift on 104 Avenue/Stony Plain Road between 121 Street and 129 Street

Traffic on 104 Avenue/Stony Plain Road between 121 Street and 129 Street will shift to the north side of the road to facilitate upcoming construction. To accommodate this:

- One lane of traffic in either direction will be maintained.
- Access to businesses and apartments on the south side of 104 Avenue/Stony Plain Road will be maintained; however, temporary access closures will be required.
- Turn movements will be maintained, where access permits
- Pedestrian access will be maintained on the north side of 104 Avenue/Stony Plain Road.
- Some crosswalks across 104 Avenue/Stony Plain Road will be closed. Please follow area wayfinding signage.



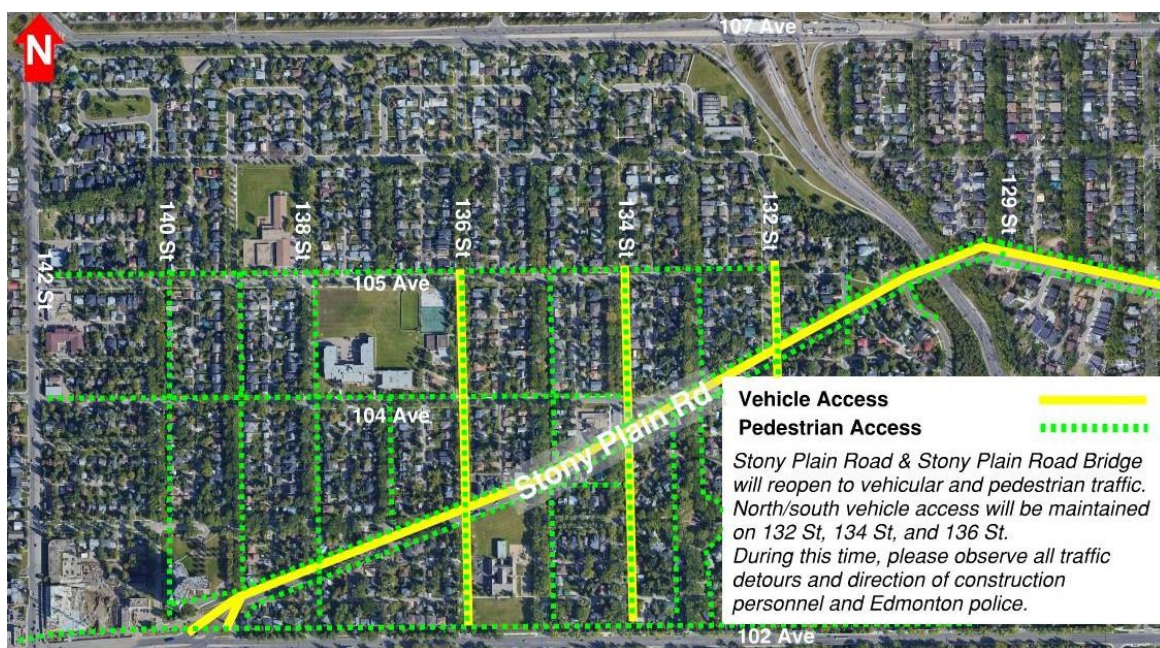
## Stony Plain Road Bridge and Stony Plain Road between 129 and 139 Street

The Stony Plain Road Bridge and Stony Plain Road between 131 Street and 139 Street and will reopen to vehicular and pedestrian traffic on November 30, 2024. Work will continue on the Overhead Catenary System (OCS), permanent streetlights, and the utility complex.

- Stony Plain Road has been permanently reduced to a single lane of traffic in either direction.
- Most intersections will be restricted to right in/right out.
- Left turns from Stony Plain Road onto adjacent streets will be permanently banned.
- Vehicular access across Stony Plain Road will be maintained at 132 Street\*, 134 Street, and 136 Street\*\*.
- Left turns onto Stony Plain Road will be maintained at 132 Street and 134 Street.
- Pedestrian access will reopen on the north and south sides of Stony Plain Road and across Stony Plain Road Bridge.
- Pedestrian access across Stony Plain Road will be maintained at 132 Street, 134 Street, 136 Street, and 138 Street.
- North/south pedestrian movements at 135 Street, 137 Street, and 139 Street are permanently closed.

*\*North/south traffic on 132 Street is currently closed and is expected to reopen in mid-December.*

*\*\* North/south traffic on 136 Street will remain open for winter **only**. Marigold will inform the public before through traffic across Stony Plain Road is permanently closed as per Edmonton City Council decision of April 19, 2022, item 6.5: [Glenora Traffic Safety Analysis](#).*





## **Area 4 (Stony Plain Road & 139-156 Street / 156 Street & Stony Plain Road – 99 Avenue)**

### **Lanes Reopening on Stony Plain Road between 139 Street and 142 Street**

The intersection of 142 Street and Stony Plain Road will reopen to full capacity

- Two lanes of traffic in either direction will be maintained on 142 Street.
- Between 139 Street and 142 Street, two east/west lanes will be maintained on Stony Plain Road.
- Turn movements will be maintained; however, northbound to westbound left turns will be banned.
- The 102 Avenue service road will reopen to right in/right out movement.
- Access to businesses and residences on the north side of Stony Plain Road will be maintained; however, temporary access closures will be required.
- Pedestrian access will be maintained; however, detours may be in place. Please follow area wayfinding signage.



### **Traffic Shift on Stony Plain Road between 143 Street to 156 Street**

On Stony Plain Road, traffic will be shifted south, and one lane in either direction will be maintained. North/south traffic on 149 Street will reopen to full capacity.

- One lane in either direction will be maintained on Stony Plain Road.
- Two north/south lanes will be maintained on 149 Street.
- At 149 Street, turn movements in all directions will be maintained
- On 156 Street at the Stony Plain Road intersection, traffic will be shifted west.
- On 156 Street, one lane of traffic in either direction will be maintained.
- On Stony Plain Road, turn movements will be maintained where available.
- Access to businesses on the north side of Stony Plain Road will be maintained; however, temporary access closures will be required.
- Pedestrian access will be maintained; however, detours may be in place. Please follow area wayfinding signage.

### **Stony Plain Road between 143 Street to 150 Street**



### **Stony Plain Road between 151 Street to 156 Street**



## **Area 5 (156 Street & 99 Ave-Meadowlark Road / Meadowlark Road – 98 Ave & 163 Street)**

### **Ongoing Construction on 156 Street/Meadowlark Road between 100 Avenue and 87 Avenue**

Drainage and roadworks continue on 156 Street/Meadowlark Road. Currently, north/south traffic on 156 Street between 93A Avenue and Stony Plain Road is shifted west. In the coming weeks, north/south traffic on 156 Street between 93A Avenue and 100A Avenue will be shifted east, and one lane of traffic in either direction will be maintained. Left turns from 156 Street are permitted at 95 Avenue only. This change is permanent. To accommodate this:

- Traffic on 156 Street/Meadowlark Road between 87 Avenue and 100A Avenue will be shifted east.
- One lane in either direction will be maintained on 156 Street/Meadowlark Road.
- Turn movements will be maintained where available; however, westbound left turns from 156 Street are permanently limited to 95 Avenue only.
- Access to businesses and facilities on the west side of 156 Street/Meadowlark Road will be maintained; however, temporary access closures will be required.
- Pedestrian access will be maintained; however, detours may be in place. Please follow area wayfinding signage.



## 156 Street/Meadowlark Road between 100 Avenue and 87 Avenue





### Traffic Shift at 159 Street and 87 Avenue

Drainage and roadworks continue at 159 Street and 87 Avenue, ahead of rail construction. Work on 87 Avenue will shift to the north side of the road, therefore, east/west traffic will be shifted south. On 159 Street, traffic is shifted east. One lane in every direction is maintained at this intersection.

- Traffic on 159 Street/Meadowlark Road between 86 Avenue and 88A Avenue is shifted east.
- One lane in either direction will be maintained on 159 Street/Meadowlark Road.
- Traffic on 87 Avenue near 159 Street will be shifted south.
- One lane in either direction will be maintained on 87 Avenue.
- Turn movements are maintained at this intersection.
- Access to businesses and facilities at this intersection will be maintained; however, temporary access closures will be required.
- Pedestrian access will be maintained; however, detours may be in place. Please follow area wayfinding signage.

### 159 Street and 87 Avenue





## **Area 6 (87 Avenue & 163 Street - Anthony Henday Drive)**

### **Traffic Pattern Change on 87 Avenue Between 159 Street and 170 Street**

Drainage work continues on the south side of 87 Avenue between 159 Street and 170 Street. Traffic in this area is shifted north and lane reductions are in place. To accommodate this work:

- Between 161 Street and 163 Street, two lanes of eastbound and one lane of westbound traffic will be maintained.
- Between 164 Street and 170 Street, two lanes of westbound and one lane of eastbound traffic will be maintained.
- Access to/from 87 Avenue at 164 Street will remain closed.
- Access to/from 87 Avenue at 161 Street will reopen.
- Turn movements are maintained where access permits.
- Pedestrian access will be maintained; however, detours will be in place. Please follow project wayfinding signage.

### **87 Avenue Between 159 Street and 170 Street**



### **Traffic Pattern Change on 87 Avenue Between 170 Street and 189 Street**

The 175 Street access to West Edmonton Mall has been reopened. The Gantry Crane has been winterized and will resume operations in the spring.

Over the winter months, 87 Avenue between 170 Street and 189 Street will reopen to two lanes of traffic in either direction and all turn movements will be maintained. This area is expected to remain in this configuration until Spring 2025. To accommodate this work:

- Between 170 Street and 176 Street, traffic will be shifted slightly south.
- Between 176 Street and 180 Street, traffic will be shifted to the outside lanes.
- Between 180 Street and 189 Street, traffic will be shifted north.
- Access to/from 87 Avenue at 189 Street has reopened.
- Turn movements are maintained.
- Pedestrian access will be maintained; however, detours will be in place. Please follow project wayfinding signage.

### 87 Avenue Between 170 Street and 178 Street



### 87 Avenue Between 178 Street and 189 Street



### Area 7 (Anthony Henday Drive)

#### Anthony Henday LRT Bridge Construction

Construction of the LRT Bridge over Anthony Henday Drive is ongoing. Overnight lane closures can be anticipated to facilitate this construction. The public will be notified ahead of this work.

### Area 8 (87 Avenue /Webber Greens Drive & Anthony Henday Drive – Lewis Farm Transit Centre)

Work continues on the Lewis Farms Storage Facility and the Lewis Farms Stop. Pedestrian access to Potters Green has recently been restored.

### Area 9 (Gerry Wright Operations & Maintenance Facility-OMF / 75 Street & Whitemud Drive)

Work continues on the Gerry Wright Operations & Maintenance Facility, Building B.



*The information in this bulletin is current to December 3, 2024. Please note that all dates are approximate and weather dependent. We thank you for your patience and understanding during the construction of the Valley Line West LRT project. Marigold Infrastructure Partners is excited to be a part of Edmonton's economic recovery.*

## **Contact Us**

### **Marigold Infrastructure Partners (for construction inquiries)**

Visit: [marigoldinfra.ca](http://marigoldinfra.ca)

Email: [Public@Marigoldinfra.ca](mailto:Public@Marigoldinfra.ca)

Call: 780-412-2183

Follow us on:   

### **City of Edmonton (for general project inquiries)**

Visit: [edmonton.ca/valleylinewest](http://edmonton.ca/valleylinewest)

Email: [lrtprojects@edmonton.ca](mailto:lrtprojects@edmonton.ca)

Call: LRT Projects Information Centre at 780-496-4874 (voicemail)