

Construction Update

Reopening of Stony Plain Road between 129 and 139 Street and the Stony Plain Road Bridge AREA 3

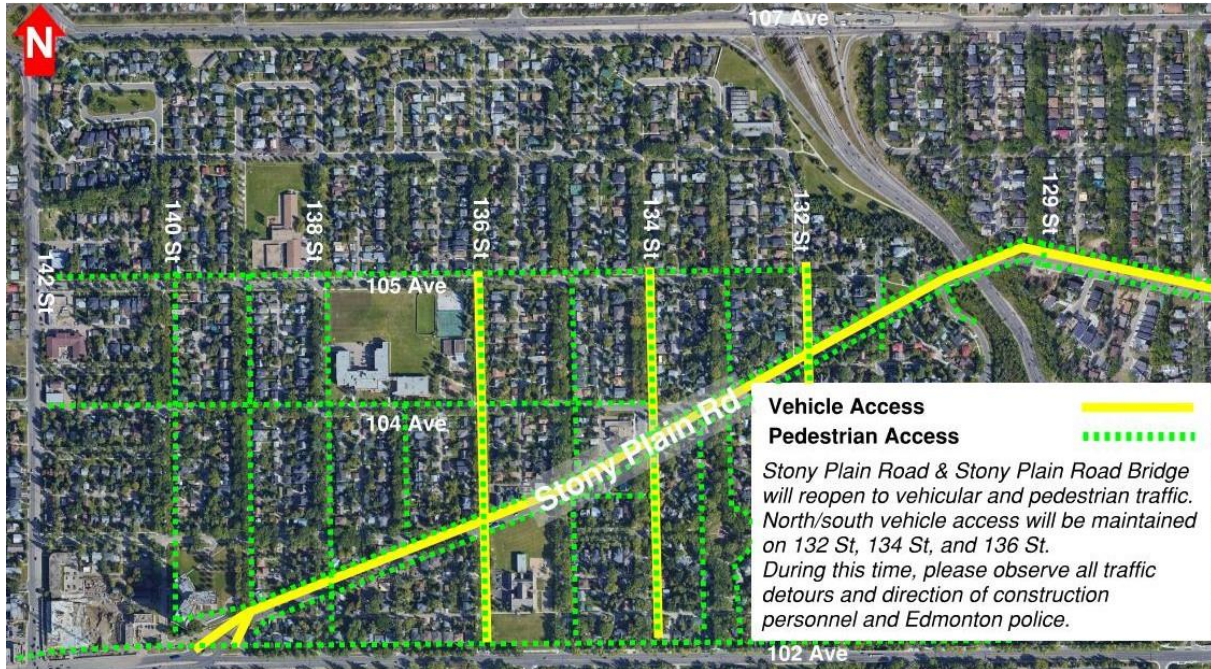
On **November 30, 2024**, Stony Plain Road between 129 Street and 139 Street and the Stony Plain Road Bridge over Groat Road will reopen to vehicular and pedestrian traffic.

What you can expect

- Stony Plain Road has been permanently reduced to a single lane of traffic in either direction.
- Most intersections will be permanently restricted to right in/right out.
- Left turns from Stony Plain Road onto adjacent streets will be permanently banned.
- Vehicular access across Stony Plain Road will be maintained at 132 Street*, 134 Street, and 136 Street**.
- Left turns onto Stony Plain Road will be maintained at 132 Street and 134 Street.
- Pedestrian access will reopen on the north and south sides of Stony Plain Road and across Stony Plain Road Bridge.
- Pedestrian access across Stony Plain Road will be maintained at 132 Street, 134 Street, 136 Street, and 138 Street.
- North/south pedestrian movements at 135 Street, 137 Street, and 139 Street are permanently closed.

* North/south traffic on 132 Street is currently closed and is expected to reopen in mid-December.

** North/south traffic on 136 Street will remain open for winter **only**. Marigold will inform the public before through traffic across Stony Plain Road is permanently closed as per Edmonton City Council decision of April 19, 2022, item 6.5: [Glenora Traffic Safety Analysis](#).



When Stony Plain Road reopens, work on the OCS (Overhead Catenary System) System, permanent streetlights, and the utility complex will continue. Marigold will inform the public of any impacts.

Construction will continue during daytime hours (7 a.m. to 9 p.m. Monday through Saturday, and 9 a.m. to 7 p.m. Sundays). Some overnight work may be required; Marigold will inform the public in advance of this work.



To accommodate this work, the public will be impacted in the following areas:

Drivers:

- East/west traffic on Stony Plain Road between 129 Street and 139 Street will reopen.
- North/south access across Stony Plain Road will be maintained at 132 Street*, 134 Street, and 136 Street**.
- North/south traffic on 132 Street is currently closed and is expected to reopen in mid-December.
- Most intersections will be permanently restricted to right in/right out.
- Left turns from Stony Plain Road onto adjacent streets will be permanently banned.
- Left turns onto Stony Plain Road will be maintained at 132 Street and 134 Street.

* North/south traffic on 132 Street is currently closed and is expected to reopen in mid-December.

** North/south traffic on 136 Street will remain open for winter **only**. Marigold will inform the public before through traffic across Stony Plain Road is permanently closed as per Edmonton City Council decision of April 19, 2022, item 6.5: [Glenora Traffic Safety Analysis](#).

Pedestrians:

- East/west pedestrian access on Stony Plain Road between 129 Street and 139 Street will reopen
- North/south pedestrian access will be maintained at 132 Street, 134 Street, 136 Street, and 138 Street.
- North/South pedestrian movements at 139 Street, 137 Street, 135 Street are permanently closed

Other impacts:

- There will be noise associated with this work. Every effort will be made to reduce the impact to the public.
- Construction will primarily occur during daytime hours; however, some overnight work may be necessary.

The information in this bulletin is current to November 29, 2024. Please note that all dates are approximate and weather dependent. We thank you for your patience during construction of the Valley Line West LRT project. Marigold Infrastructure Partners is excited to be a part of Edmonton's economic recovery.

Contact Us

Marigold Infrastructure Partners (for construction inquiries)

Visit: marigoldinfra.ca

Email: public@marigoldinfra.ca

Call: 780-412-2183

Follow us on:   

City of Edmonton (for general project inquiries)

Visit: edmonton.ca/valleylinewest

Email: lrtprojects@edmonton.ca

Call: LRT Projects Information Centre at 780-496-4874 (voicemail)