

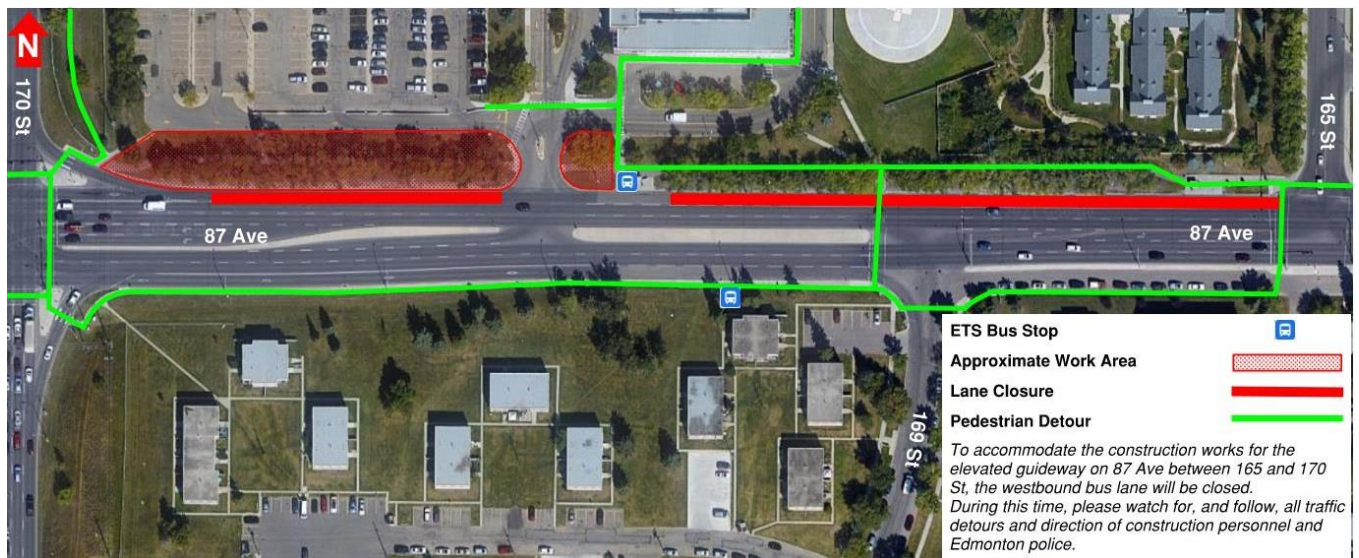
Construction Notice: Valley Line West LRT Lane Closure for the Construction of the Elevated Guideway

The Valley Line West LRT will feature an elevated guideway from 163 Street to 182 Street on 87 Avenue and include the Misericordia and West Edmonton Mall Stations.

On or around **October 12, 2021**, Marigold Infrastructure Partners (MIP) will begin work on the portion located between 165 Street and 170 Street. To accommodate this construction, the westbound bus lane on 87 Avenue will be closed between 165 Street and 170 Street. This closure will remain in place until construction is complete.

Once the work site has been fenced off, preparatory activities will include the removal of trees*, where necessary, and clearing and leveling the work site to create a safe work area. After the area has been prepared, a drill rig can be transported to the site to begin digging the foundations for the elevated guideway.

87 Avenue between 165 Street & 170 Street



Impacts to the Public:

- The westbound curb lane on 87 Avenue between 165 Street and 170 Street will be closed.
- Westbound to northbound turns at 170 St will be maintained.
- Two lanes of traffic in either direction will be maintained.

- Access to Misericordia Hospital will be maintained.
- Most pedestrian traffic will be detoured to the south side of 87 Avenue. Please observe and follow all maps and wayfinding signage posted in the area.
- Access to the ETS bus stops will be maintained, however, the stops may be shifted slightly.
- Most of this work will occur during daytime hours (7 a.m. – 9 p.m. Monday - Saturday, 9 a.m. – 7 p.m. Sundays), however, occasional overnight work can be expected. The public will be notified ahead of these works.
- There may be periodic traffic disruptions associated with the construction of the elevated guideway. The public will be notified ahead of these disruptions.
- There will be noise associated with this work. Every effort will be made to reduce the impact to the public.

***With respect to tree removal:**

- There will be a full landscaping plan that will see plantings of ~1800 new native trees and shrub to areas along the alignment.
- Each tree affected has been assessed and recorded by the City and Marigold.
- Under the City of Edmonton policy, Marigold will be compensating the City for each tree being removed.
- Tree removal will occur outside of the bird nesting season, to not disrupt nesting migratory birds.

The information in this bulletin is current to October 7, 2021. Please note that all dates are approximate and weather dependent. We thank you for your patience and understanding during the construction of the Valley Line West LRT project. Marigold Infrastructure Partners is excited to be a part of Edmonton's economic recovery.

Contact Us

Marigold Infrastructure Partners (for construction inquiries)

Email: Public@Marigoldinfra.ca

Call: 780-412-2183

City of Edmonton (for general project inquiries)

Visit: edmonton.ca/valleylinewest

Email: lrtprojects@edmonton.ca

Call: LRT Projects Information Centre at 780-496-4874 (voicemail)