

Construction Update

Reopening of 139 Street and 142 Street Intersections at Stony Plain Road AREA 4

This is a supplemental notice for work previously mentioned in the following notice:
[Temporary Closure of 139 Street and 142 Street Intersections at Stony Plain Road](#)

On June 10, Marigold initiated the temporary full closure of the 139 Street intersection and on June 12, we implemented the temporary partial closure of the 142 Street intersection at Stony Plain Road, as part of the accelerated roadwork associated with the Valley Line West LRT.

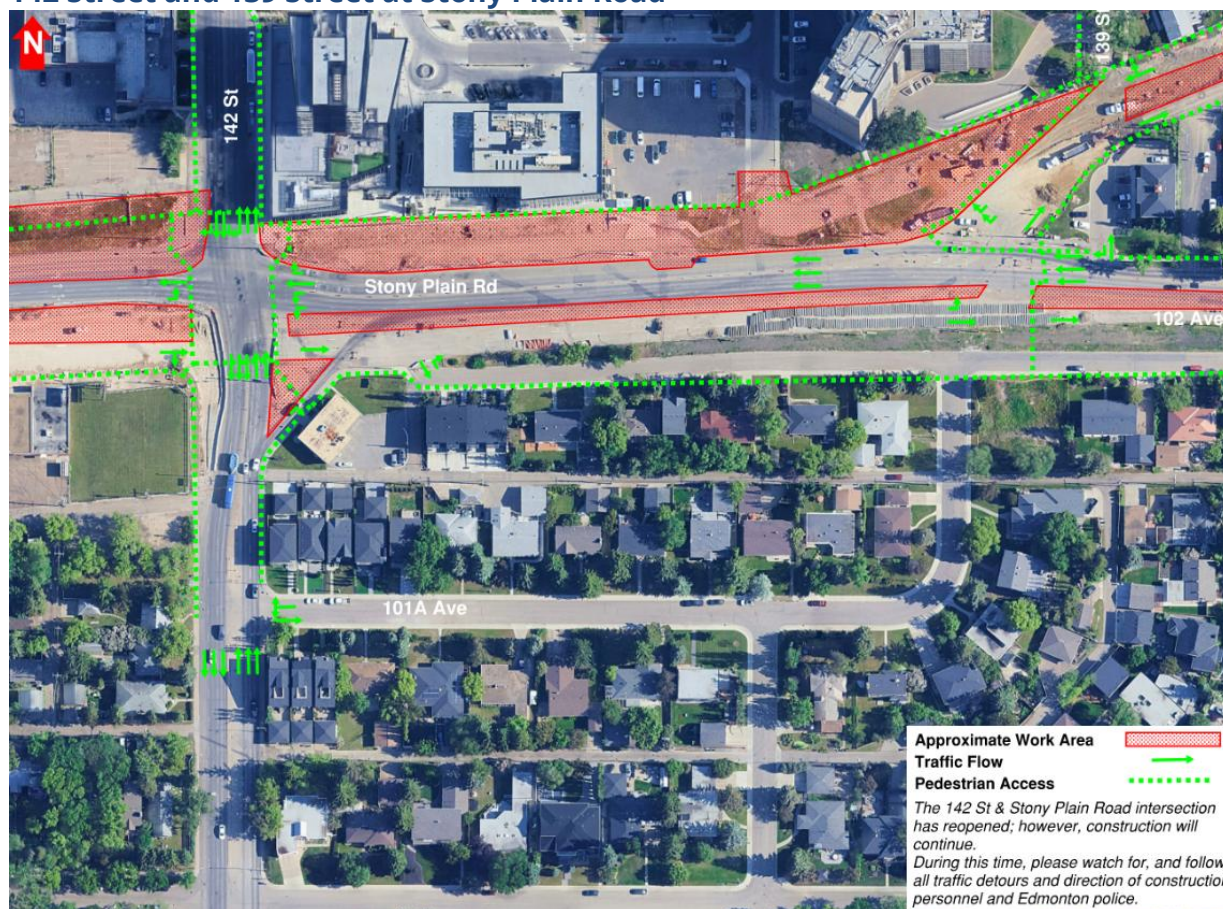
On **August 14, 2025**, this intersection reopened.

What you can expect

- North/south traffic on 142 Street has reopened to full capacity.
- East/west traffic on Stony Plain Road has reopened to one lane of traffic in either direction through the 139 Street intersection.
- Turn movements are maintained.
- Pedestrian access reopened throughout the intersection.

While the roadwork is complete and this intersection has reopened, construction in the area will be ongoing until completion. The public will be notified ahead of further disruptions.

142 Street and 139 Street at Stony Plain Road



For detailed information of what this intersection will look like in its final configuration, check out the [City of Edmonton's Valley Line West LRT Booklet](#).

The information in this bulletin is current to August 15, 2025. Please note that all dates are approximate and weather dependent. We thank you for your patience during construction of the Valley Line West LRT project.

Contact Us

Marigold Infrastructure Partners (for construction inquiries)

Visit: marigoldinfra.ca

Email: public@marigoldinfra.ca

Call: 780-412-2183

Follow us on:   

City of Edmonton (for general project inquiries)

Visit: edmonton.ca/valleylinewest

Email: lrtprojects@edmonton.ca

Call: LRT Projects Information Centre at 780-496-4874 (voicemail)