

## Construction Notice

### Intersection Closure at 137 Street and Stony Plain Road

#### AREA 3

*This is a supplemental notice for work previously mentioned in the following notice:  
[Full Closure of Stony Plain Road between 131 Street and 139 Street](#)*

**On or around July 4, to accommodate Valley Line West LRT construction on Stony Plain Road, the intersection of 137 Street\* and Stony Plain Road will be closed to vehicular traffic. Pedestrian access across Stony Plain Road will be maintained at 132 Street, 134 Street, 136 Street, and 138 Street.**

*\*The intersections of 131 Street, 132 Street, 133 Street, 134 Street, and 135 Street are already closed.*

Construction will primarily occur during the day (7 a.m. to 9 p.m. Monday through Saturday and 9 a.m. to 7 p.m. Sunday); however, occasional overnight work may be necessary. The public will be notified in advance of this work.

This closure is expected to last until October 31.

### To accommodate this work, the public will be impacted in the following ways:

#### Drivers:

- East/west traffic on Stony Plain Road between 129 Street and 139 Street is currently closed. Traffic is detoured to 102 Avenue or 107 Avenue.
- North/south traffic across Stony Plain Road is currently closed at 131 Street, 132 Street, 133 Street, 134 Street and 135 Street.
- North/south traffic across Stony Plain Road will be closed at 137 Street.
- Please follow area wayfinding signage.

#### Pedestrians:

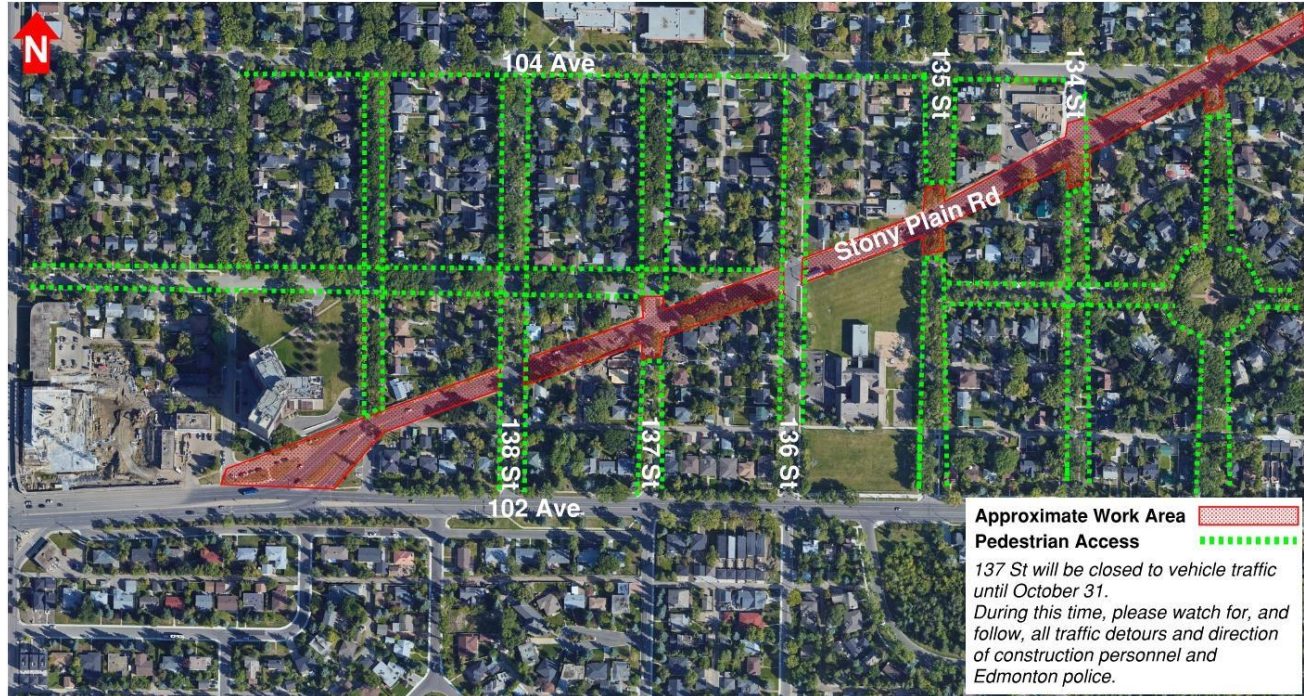
- East/west pedestrian access on Stony Plain Road between 131 Street and 139 Street is currently closed.
- North/south pedestrian access will be maintained at 132 Street, 134 Street, 136 Street, and 138 Street. Please follow project wayfinding signage.

#### Other impacts:

- There will be noise associated with this work such as that of heavy equipment and increased construction vehicle traffic in the area. Every effort will be made to reduce the impact to the public.

- Construction on Stony Plain Road will primarily occur during daytime hours; however, some overnight work may be necessary.
- This intersection closure is expected to last until October 31.

### Stony Plain Road at 137 Street



*The information in this bulletin is current to June 12, 2023. Please note that all dates are approximate and weather dependent. We thank you for your patience and understanding during the construction of the Valley Line West LRT project. Marigold Infrastructure Partners is excited to be a part of Edmonton's economic recovery.*

#### Contact Us

#### Marigold Infrastructure Partners (for construction inquiries)

Visit: [marigoldinfra.ca](http://marigoldinfra.ca)

Email: [public@marigoldinfra.ca](mailto:public@marigoldinfra.ca)

Call: 780-412-2183

#### City of Edmonton (for general project inquiries)

Visit: [edmonton.ca/valleylinewest](http://edmonton.ca/valleylinewest)

Email: [lrtprojects@edmonton.ca](mailto:lrtprojects@edmonton.ca)

Call: LRT Projects Information Centre at 780-496-4874 (voicemail)