

Construction Notice

Drainage and Road Works on 87 Avenue between 170 Street and 159 Street Area 6

On or around **November 21, 2024**, Marigold crews will be shifting traffic on 87 Avenue between 170 Street and 159 Street to facilitate construction throughout the winter months. This traffic pattern is expected to be in place until Spring 2025.

At 159 Street and 87 Avenue

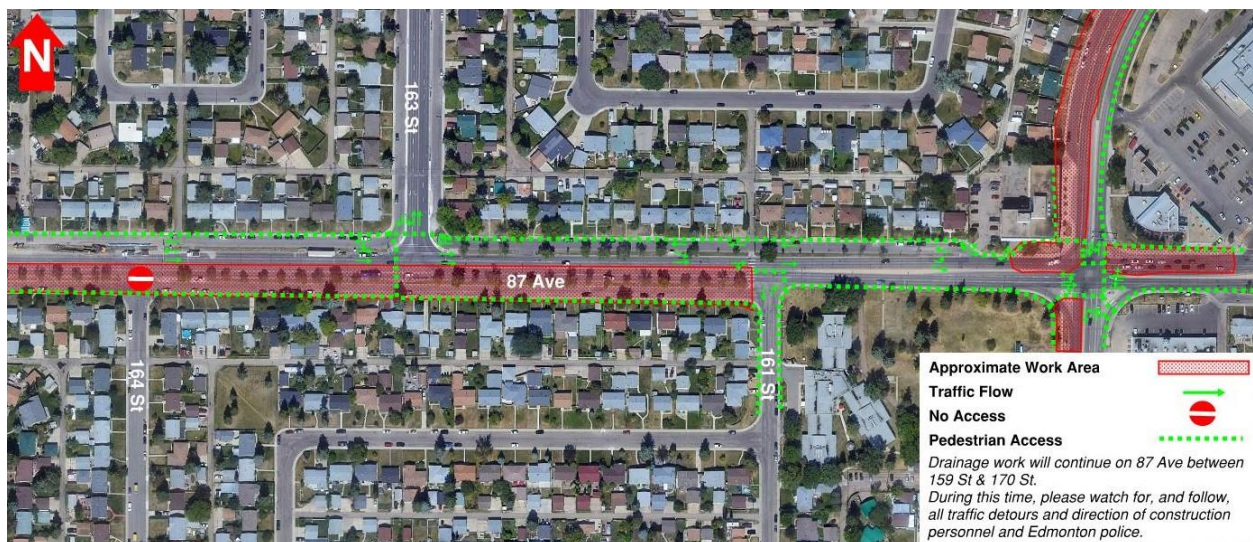
Traffic on 87 Avenue near 159 Street will be shifted south and traffic on 159 Street will be shifted east. One lane of traffic in every direction will be maintained, as will turn movements.

Most pedestrian access will reopen; however, the west crosswalk across 87 Avenue will be closed. Please follow project wayfinding signage.

87 Avenue between 159 Street and 164 Street

Traffic on 87 Avenue between approximately 160 Street and 165 Street is shifted north. Between 161 Street and 163 Street, two lanes of eastbound traffic and one westbound lane will be maintained. Access to/from 87 Avenue at 164 Street will remain closed; however, access to/from 87 Avenue at 161 Street will reopen. Turn movements are maintained, where access permits.

Pedestrian access will reopen on the south side of 87 Avenue. Please follow project wayfinding signage.



To accommodate this work, the public will be impacted in the following areas:

Drivers:

- Traffic on 159 Street is shifted east.
- One lane in either direction will be maintained on 159 Street.
- Traffic on 87 Avenue near 159 Street will be shifted south.
- One lane in either direction will be maintained on 87 Avenue near 159 Street.
- Traffic on 87 Avenue between approximately 160 Street and 165 Street is shifted north.
- Between 161 Street and 163 Street, two lanes of eastbound traffic and one westbound lane will be maintained.
- Access to/from 87 Avenue at 164 Street will remain closed; however, access to/from 87 Avenue at 161 Street will reopen.
- Turn movements are maintained, where access permits.
- Traffic between 164 Street and the entrance to Misericordia Community Hospital will be shifted south.
- Near Misericordia Community Hospital, two lanes of westbound traffic and one lane of eastbound traffic will be maintained.
- The intersection of 170 Street and 87 Avenue will reopen to full capacity.

Pedestrians:

- Pedestrian access will reopen on the south side of 87 Avenue; however, some detours will be in place.
- Please follow project wayfinding signage.

Other impacts:

- Construction work will occur during daytime hours (7 a.m. to 9 p.m. Monday through Saturday and 9 a.m. to 7 p.m. Sunday).
- There will be noise associated with this work. Every effort will be made to reduce the impact to the public.
- This traffic pattern is expected to last until Spring 2025.

The information in this bulletin is current to November 18, 2024. Please note that all dates are approximate and weather dependent. We thank you for your patience and understanding during the construction of the Valley Line West LRT project. Marigold Infrastructure Partners is excited to be a part of Edmonton's economic recovery.

Contact Us

Marigold Infrastructure Partners (for construction inquiries)

Visit: marigoldinfra.ca

Email: public@marigoldinfra.ca

Call: 780-412-2183

Follow us on:   

City of Edmonton (for general project inquiries)

Visit: edmonton.ca/valleylinewest

Email: lrtprojects@edmonton.ca

Call: LRT Projects Information Centre at 780-496-4874 (voicemail)