

## Construction Notice

### Traffic Shift on Stony Plain Road between 143 Street and 150 Street

#### AREA 4

During the week of **December 9, 2024**, Marigold crews will begin preparing the north side of Stony Plain Road between 143 Street and 150 Street for construction. This work is weather dependent.

To accommodate this, traffic on Stony Plain Road will be shifted south. A single lane of traffic in either direction will be maintained, and most cross streets will be right in/right out, only.

On 149 Street, two lanes of traffic in either direction will be maintained.

Access to businesses/facilities on the north side of Stony Plain Road will be maintained; however, access closures may be required.

Access to/from Stony Plain Road from north cross streets will be maintained; however, intermittent closures will be necessary. The public will be notified ahead of these closures.

East/west pedestrian access will be maintained on the south side of Stony Plain Road. No through pedestrian access will be permitted on the north side of Stony Plain Road. Access will be maintained to businesses/facilities only. Pedestrian access across Stony Plain Road will be maintained at 143 Street, 146 Street, 148 Street, and 149 Street. Please follow project wayfinding signage in the area.

Construction will occur during daytime hours (7 a.m. – 9 p.m. Monday – Saturday, 9 a.m. – 7 p.m. Sundays), and is expected to last until Spring 2025.

### To accommodate this work, the public will be impacted in the following areas:

#### Drivers:

- Traffic on Stony Plain Road will be shifted south.
- A single lane in either direction will be maintained on Stony Plain Road.
- Two lanes in either direction will be maintained on 149 Street.
- Access to/from most adjacent cross streets will be right in/right out only.
- Intermittent access closures from north cross streets onto Stony Plain Road can be anticipated.

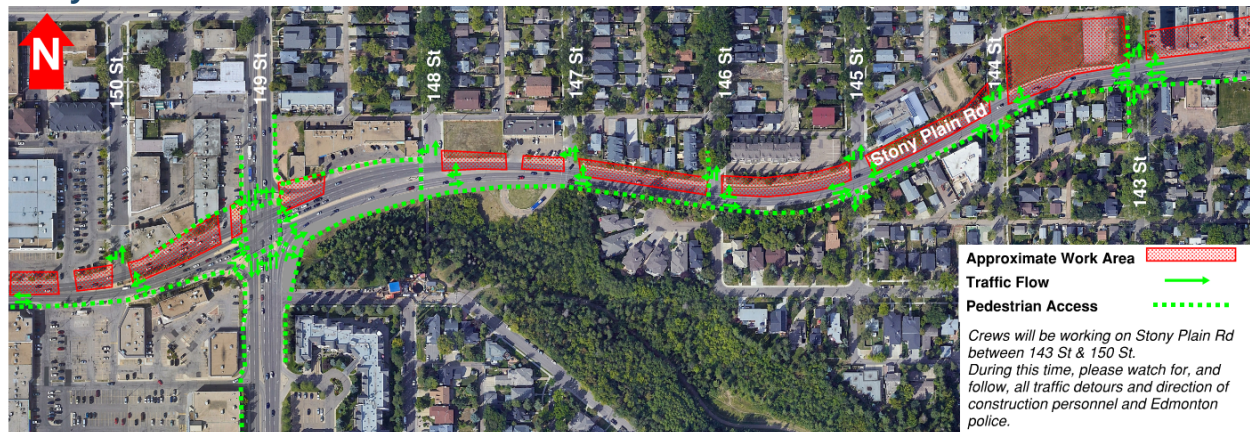
### Pedestrians:

- East/west pedestrian access will be maintained on the south side of Stony Plain Road.
- No through access will be permitted on the north side of Stony Plain Road. Access will be permitted to businesses/facilities only.
- Pedestrian access across Stony Plain Road will be maintained at 143 Street, 146 Street, 148 Street, and 149 Street.
- Please observe all project wayfinding signage in the area.

### Other impacts:

- Construction will occur during daytime hours (7 a.m. to 9 p.m. Monday to Saturday, 9 a.m. to 7 p.m. Sundays)
- There will be noise associated with this work. Every effort will be made to reduce impacts to the public.
- Access to north businesses and facilities will be maintained.
- This work is expected to last until Spring 2025.

### Stony Plain Road between 143 Street and 150 Street



*The information in this bulletin is current to December 10, 2024. Please note that all dates are approximate and weather dependent. We thank you for your patience during construction of the Valley Line West LRT project. Marigold Infrastructure Partners is excited to be a part of Edmonton's economic recovery.*

### Contact Us

#### Marigold Infrastructure Partners (for construction inquiries)

Visit: [marigoldinfra.ca](https://marigoldinfra.ca)

Email: [public@marigoldinfra.ca](mailto:public@marigoldinfra.ca)

Call: 780-412-2183

Follow us on:   

**City of Edmonton (for general project inquiries)**

Visit: [edmonton.ca/valleylinewest](http://edmonton.ca/valleylinewest)

Email: [lrtprojects@edmonton.ca](mailto:lrtprojects@edmonton.ca)

Call: LRT Projects Information Centre at 780-496-4874 (voicemail)